

LEGACY LIFE



A SOCIAL ENTERPRISE &
SUSTAINABLE DEVELOPMENT
**CREATING A HEALTHY &
BETTER LIFE**

NEWLY UPGRADED
2° REDOXY ESSENCE

NEW TECHNOLOGICAL ADVANCEMENT
ON ACETYL HEXAPEPTIDE-8

LEGACY LIFE

NOV-DEC
2022

CONTENT

01 **A SOCIAL ENTERPRISE & SUSTAINABLE DEVELOPMENT**
Creating A Healthy And Better Life

02 **SAVE OUR MOTHER NATURE**

03 **NEWLY UPGRADED 2° REDOXY ESSENCE**
New Technological Advancement on Acetyl Hexapeptide-8

04 **THE IDEAL SKIN CARE ROUTINE**

05 **AN INTRODUCTION TO FEMALE SEX HORMONES**

06 **RL COOKWARE:**
Giving Your Kitchen That Magic Touch

07 **LEGACY NEWS**

08 **UPCOMING EVENTS**





2014

- Founded by Dr. Lee Siew Keong
- Released our first 2 products, 2° Redoxy Essence and REOXlife Mediterranean Gold
- First international expansions in Thailand and Singapore

2015

- Legacy Science enters into strategic alliances with Japan's Unilife, France's Fytexia and University Kebangsaan Malaysia (UKM)
- Establishment of a solid foothold in Indonesia
- Formation of RM 2 million Biasiswa Dr Lee Siew Keong to provide scholarships and educational aids to deserving students especially to the socially deprived and destitute people



2016

- MMNT™ technology transfer between Unilife and Return Legacy



2017

- Invested RM13 million in the establishment of Nutraceutical GMP Factory



2018

- Singapore's new office opening
- The expansion and relocation of Indonesia's headquarter to Jakarta



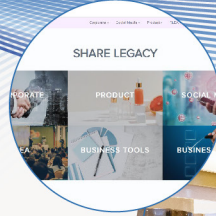
2019

LEGACYCARE
ASSOCIATION MALAYSIA

- MOU signing ceremony with Bogor Agricultural University Indonesia to begin the clinical studies of Return Legacy's products
- The inception of Legacy Care Association Malaysia
- Was awarded The BrandLaureate Prominent Business Brand Awards 2019 in Beauty and Wellness Solutions

2020

- The official roll-out of Share Legacy - a one-stop RL resources and information platform
- A brand-new look of RL Experience Centre at Malaysia's headquarter to showcase a perfect combination of modern and interactive technology to deliver a great product experience to Legacians



2021

- An MOU was signed with University Kebangsaan Malaysia (UKM) for another 5 years for Biasiswa Dr. Lee Siew Keong aid worth RM2 million to deserving students of UKM

2022



● TAIWAN EXPANSION

Return Legacy has expanded to Taiwan. In August 2022, our DCEO Mr. Desmond Hooi and Taiwan's CMO Mr. Philip Kang attended the "Taiwan-Malaysia Forum" and shared resourceful insights which received an arousing response from all participants. To date, we have 13 Ruby Managers, 22 Diamond Directors and 11 Crown Ambassadors in Taiwan.

● LCAM CERTIFIED AS SOCIAL ENTERPRISE

Since the inception of LCAM, we have provided food, school supplies to support children from disability centres, underprivileged families, orphanages, asylum seekers and indigenous communities. This year, the Ministry of Entrepreneur Development and Cooperatives has officially accredited LCAM with Social Enterprise accreditation status.



● RL RECYCLE PROGRAM LAUNCH

RL RECYCLE aims to recycle empty bottles into valuable alternative energy sources, reducing carbon emissions and creating a sustainable environment in compliance with the United Nations Sustainable Development Goals (SDGs). We believe this action will reduce our environmental impact on the planet and be a step towards a more circular future.

A SOCIAL ENTERPRISE AND SUSTAINABLE DEVELOPMENT

CREATING A HEALTHY AND BETTER LIFE

A new era entrusts new missions, and a new journey calls for new responsibilities.

Becoming a social enterprise for the betterment of society and the environment is always the vision of Return Legacy to march towards sustainable development. As a company focusing on promoting health and physical appearance, we firmly adhere to the United Nations (UN) Sustainable Development Goals (SDGs) as our comprehensive guide for future developments.

UN system works on all three pillars of sustainable development - economic, social and environmental. Hence, to strike and maintain the balance, we plan our company development towards the goals following these three pillars. We hope to advance social development, protect the environment, and create economic value to help people achieve a better life.

INCORPORATING SUSTAINABILITY THROUGHOUT BUSINESS DEVELOPMENT

CREATE ECONOMIC SUSTAINABILITY TOGETHER

According to the report of the International Labour Organisation (ILO) 2020, the ongoing struggle of near to 500 million people being paid less relative to their working hours or lacking work opportunities. In Return Legacy, we provide an impartial and equal opportunity to everyone who wishes to establish their own business and pursue their life destiny. We prioritize providing opportunities, and proper entrepreneurial learning guided by human-led growth and enhancing Legacians' quality of life.

OUR ACTIONS

Support Legacians' Growth

With unyielding support and training, Return Legacy encourages Legacians to improve their abilities, leads them to learn and grow, and drives them to discover their self-worth while creating social values.

The establishment of Return Legacy Entrepreneur Academy (RLEA) is to provide valuable practical entrepreneurial experience. "Performing With Pleasure, Striving With Honesty" guides our learning culture of RLEA. Our online education model, SBL System 331, was designed to educate Legacians on how to share Return Legacy business opportunities, team-building and leading to create and maintain a healthy marketing environment for the career development of each Legacians.

Training For Legacians

Return Legacy is armed with an experience training team focusing on product training. We develop materials and programs to meet market needs, and advocate knowledge on products, dermatology and nutrition. On top of that, we develop comprehensive training materials and conduct new product training and talks throughout the country.

To solve the problem of Legacians who are unable to attend offline physical training, we have started the online training platform in 2021. Training is conducted through Facebook Live or Zoom, aiming to help Legacians to equip with product knowledge anytime, anywhere.



BUILDING A NEW LOOK OF SOCIETY

With fulfilling social responsibility in mind, Return Legacy hopes to give back to society with kindness and love, and bring consequential impact to people. By helping those disadvantaged and disabled, we hope to instil impartiality and equality in all groups in society to realize their goals and dreams, leading us towards the accomplishment of sustainable development mission.

OUR ACTIONS

Equal Treatment

Return legacy is a direct selling company that advocates equal and diverse sustainable business opportunities. We provide equal treatment, equal business opportunities and equal social recognition. We believe that every individual has an equal opportunity to make the most of their lives and will ensure that they live their lives with pride and dignity, empowering them towards purposeful and improved lives.

Equal business opportunities are the basis for promoting human development. It is also a decisive factor in promoting sustainable human development. We will work our best to contribute to this goal and bring positive changes to all Legacians.

Support The Less Fortunate And Needy

Through Legacy Care Association Malaysia (LCAM), Return Legacy hopes to enrich the lives of the less fortunate. Through providing financial and emotional support, we aim to deliver both holistically to help the less fortunate and needy, sparking their journey to achieve fulfilling and meaningful lives filled with joy, hope, and purpose.

To ease their daily burden, Return Legacy has been contributing in terms of financial assistance and donations in everyday household essentials, clothes, as well as food and beverages. It is with the hope that when we ease their daily burden, they can live a better life and feel that there is someone out there who cares for their well-being.

THE EARTH IS WHAT WE HAVE IN COMMON

Caring for our environment's sustainability is what we have always pursue. From product development to the company's operation, we strive to be a more sustainable, resilient business to protect our planet and preserve it for future generations.

Return Legacy has taken the initiative by converting part of our products' packaging to environmentally-friendly materials and is striving to embed sustainability across all our products by using recyclable materials, creating a harmonious coexistence between humans and nature.



OUR ACTIONS

Reduce Paper Wastage

From 2010 to 2060, the global consumption of pulp and paper is expected to double. Unfortunately, the same will be the amount of paper waste. Paper production causes deforestation, uses enormous amounts of energy and water and contributes to air pollution and waste problems.

In this regard, Return Legacy has taken the initiative to reduce paper wastage by creating online Share Legacy in 2020 - a one-stop information platform for Legacians to share information among their peers and to reduce paper consumption.

Eco-friendly packaging materials

Return Legacy has always strived towards the sustainability of product packaging. From product packaging design, and material selection to product processing, we are moving forward to reduce our carbon footprint. At the same time, low carbon emissions and sustainable product packaging materials and manufacturing are adopted for sustainable development.

Over the years, not only did we promote health and physical wellness to our consumers, we are also converting part of our products' packaging to environmentally-friendly material. These include eco-friendly and recyclable soy ink printing, non-toxic and odourless polypropylene film (OPP) tape, biodegradable plastic bags, reusable non-woven bags to embed sustainability across all our products.

Empty bottles recycling campaign

To further our environmental sustainability impact, we have launched RL RECYCLE, spurring and encouraging everyone to protect our beautiful Mother Earth. We all need to take proactive steps toward the environment to protect our planet and preserve it for our children and future generations.

RL RECYCLE aims to recycle empty bottles into useful alternative energy sources, reducing carbon emissions and creating a sustainable environment. We believe this action will reduce our environmental impact on the planet and be a step towards a more circular future.

To realize an ideal society and environment, Return Legacy takes on the challenge and endeavour to improve environmental problems and other societal issues, creating new values and a better society to be on par with the United Nations Sustainable Development Goals (SDGs).

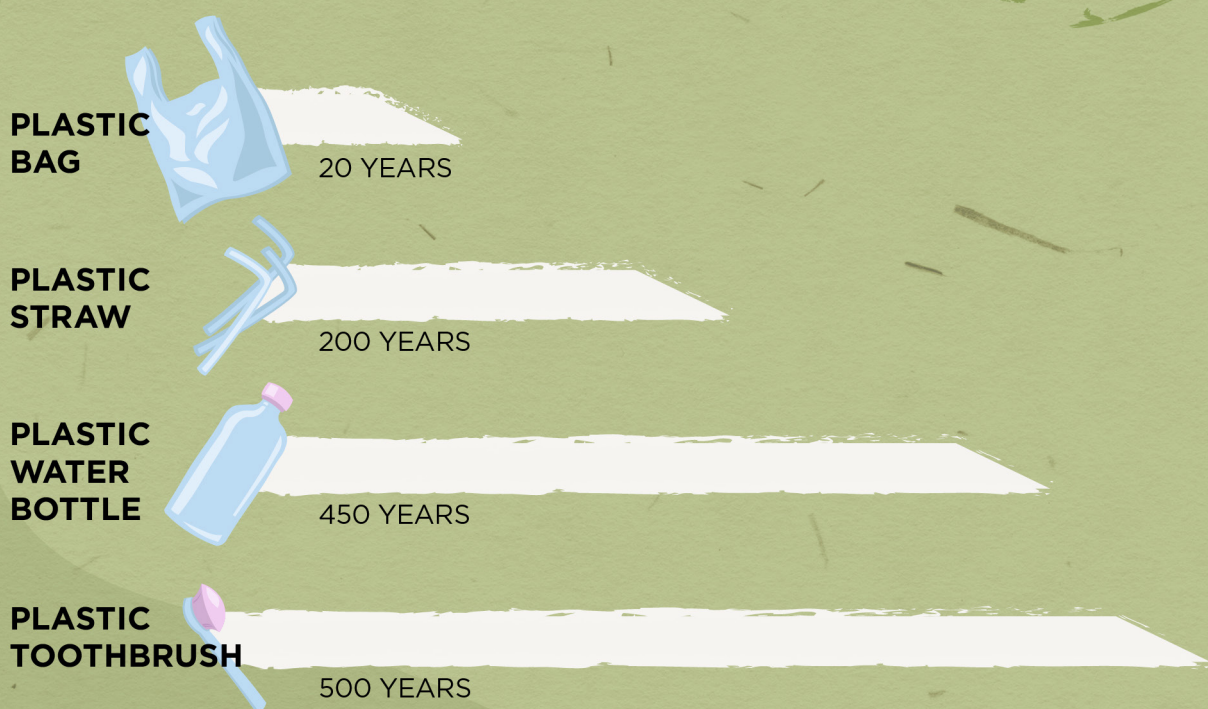
With our belief in "Enriching Life And Benefiting The Society", we are committed to creating a sustainable and better society and achieving a harmonious existence with society.

SAVE OUR MOTHER NATURE

NATURE CAN'T DO IT ALL

How long does it take for our waste to decompose?

Plastic waste is choking our planet - polluting the air, water, and soil both people and all living things need.



Source: Lifecycle of selected plastic products, Statista 2022

<https://www.statista.com/statistics/1192549/lifecycle-selected-plastic-product/>

With the rapid development of the social economy and the increasing amount of waste and domestic garbage, the pollution is suffocating our planet. Among them, plastic pollution or the term “white pollution” has become a major factor in the global environmental pollution.

Since the invention of plastic in 1907, it has brought great convenience to people. However, the pollution and harm it causes are resulting in significant urban environmental consequences. Over the years, massive production, use, disposal and mismanaged plastic waste have caused an enormous impact on the climate, as well as on livelihoods and ecosystems. White pollution is a severe matter, and humanity's love for it may backfire if nothing has been done about it.



DO NOT LET OUR GREEN ENVIRONMENT GO TO WASTE

Most plastic bags are simply thrown out

Most plastic bags are made from polyethylene that takes centuries to degrade, and less than 1% are recycled. Each ton of recycled plastic bags saves the energy equivalent to 11 barrels of oil.

12 minutes of use, 1000 years of pollution

A plastic bag takes up to 1000 years to break down. On average, a plastic bag is used for just 12 minutes.

At least 300 million plastic bags are disposed of into the ocean every year

We use 100 million tons of plastic every year, and about 10% of this plastic ends up in the oceans. An estimation of 300 million plastic bags every year end up in the Atlantic Ocean alone.

Plastic bags used in the world every year can cover an area twice the size of France

This year 5 trillion plastic bags will be consumed. It is equivalent to 160,000 a second, of which only 9% are being recycled. Put one after another, they would go around the world 7 times every hour and cover an area twice the size of France (about 3 times the size of Malaysia).

By 2050, there could be more plastic than fish in the oceans

A staggering 800 million tons leak into the ocean every year, and there are currently more than 150 million tons of plastic waste; By 2050, there will be more plastic in the ocean than fish.

OUR EARTH, OUR RESPONSIBILITY

We have always adhered to caring for the environment and sustainable development. From product development to the company's operation, we strive to reduce our carbon footprint and to be a more sustainable, resilient business. Over the years, not only did we promote health and physical wellness to our consumers, we are also converting our products' packaging to environmentally-friendly material.

In 2015, we successfully launched 2° skincare series. The concept of 2° is inspired by the Copenhagen Accord reached by the United Nations Climate Change Conference in 2009. One of the critical elements of the conference includes the agreement of all major emitters of greenhouse gases (GHGs) that global temperature increase should be kept below 2° C to reduce carbon emissions.

Furthermore, a report issued by the Intergovernmental Panel on Climate Change (IPCC) stated that, with clear benefits to people and natural ecosystems, global warming should be limited to below 2° C and could go hand-in-hand to ensure a more sustainable and equitable society.

TOWARDS ENVIRONMENTAL SUSTAINABILITY

Return Legacy has taken the initiative by converting part of our products' packaging to environmentally-friendly materials and is working towards the journey to embed sustainability across all our products by using recyclable materials.

- ✓ Eco-friendly and recyclable soy ink printing
- ✓ Non-toxic and odourless polypropylene film (OPP) tape
- ✓ Biodegradable plastic bags
- ✓ Reusable non-woven bags
- ✓ Ecologically recyclable packaging materials



HOW MUCH PLASTIC DO YOU USE IN A DAY?

The use of plastics is deeply embedded in our daily lives, from grocery bags and cutlery to water bottles. But the quest for convenience has gone too far, and we are failing to use plastics efficiently, wasting valuable resources and harming the environment.

RL Recycle aims to recycle and reuse plastic waste to create a positive impact on our natural resources. We hope to raise awareness of environmental protection.

In every action we take, no matter how small, has the power to increase people's awareness of environmental protection, make a contribution to the environment, protect our beautiful Earth and achieve the goal of environmental sustainability.

Start now by recycling your empty bottle with RL RECYCLE. Let's all do our bit and make a positive difference!

RECYCLE

22 EMPTIES OF

THE NEW
UPGRADE



OR

60 EMPTIES FROM THE LIST
OF ACCEPTED PRODUCTS

BODY CARE

- A'maze Summer Bliss Shower Gel
- A'maze Anti-Bacterial Body Wash
- SHS Secret Hygiene Solution (150ml)

SKIN CARE

- 2° Cleansing Water (150ml)
- 2° Activator Fresh (99ml)
- New Upgrade 2° Redoxy Essence (22ml)

HEALTH SUPPLEMENT

- REOXlife Vitamin C (120 tables)
- REOXlife PRO Collagen Peptides (200g/500g)
- NUREOX Protein Promix (Chocolate/Vanilla)

RECYCLING REWARD

RECYCLE FULL-SIZE RL'S
EMPTY BOTTLE TO US AND GET
A COMPLIMENTARY FULL-SIZE OF

THE NEW
UPGRADE



START RECYCLING TODAY

STEP 1 Clean & dry your RL's empties

STEP 2 Return your empties to RLHQ
with RL Recycle Participant
Registration Form attached

bit.ly/RLRecycle_EN

STEP 3 Receive complimentary NEW
UPGRADE 2° REDOXY ESSENCE

TERMS & CONDITIONS

1. Participant must return a total of 22 empties NEW UPGRADE 2°REDOXY ESSENCE or 60 empties (from the list of accepted packaging) at the same time to be rewarded.
2. Ensure that the empty bottles/containers are clean and dry.
3. The participant shall bear the cost of returning empty bottles/containers
4. The reward redemption entitlement is on your next purchase in Legacy Mall.
5. The company reserves the right to reject the bottles/containers returned.
6. The company reserves the right to replace any gift with items of similar value without prior notice.
7. The company reserves the right to change these terms and conditions at any time without prior notice.

2°



Redoxy®
ESSENCE

Wrinkles, fine lines, inelastic skin
are all obvious signs of skin aging.

What many people don't realize is that
there's a simple solution to this.

It's none other than a simple ingredient named Acetyl Hexapeptide-8.

Acetyl Hexapeptide-8: The Basics

Acetyl Hexapeptide-8 is known for its remarkable anti-aging effect, just like what botox could do. It reduces the contraction of facial expression muscles every time a facial expression is made. As a result, it significantly reduces aging as mention above, such as wrinkles, fine lines and expression lines.

2° Redoxy Essence and Acetyl Hexapeptide-8

Return Legacy's newly upgraded best-selling anti-aging product 2° Redoxy Essence with technological advancements on acetyl hexapeptide-8. Through this ingredient, 2° Redoxy Essence now boasts more excellent capabilities regarding wrinkle and fine line reduction as well as the smoothening of the skin. Statistics show that with the new technological advancement of acetyl hexapeptide-8, 2° Redoxy Essence reduces the size of wrinkles by up to 30%, the number of wrinkles by up to 7%, and the roughness of the skin by up to 14% - all the anti-aging effects you could ever dream of getting!

2° Redoxy Essence also contains Return Legacy's very proprietary Micro-Mineralised Nutrient Technology (MMNT) which facilitates the product's actives absorption. This makes it ideal for delaying and reducing fine lines, restoring skin elasticity, reducing skin dullness, and making the skin much smoother and firmer!

Another key ingredient in 2° Redoxy Essence is sodium hyaluronate. Sodium hyaluronate keeps fluids inside the skin, making the skin more elastic and plump. Coupled with whey protein, it encourages skin cell renewal and improves skin elasticity and firmness, giving you a smooth and youthful radiance.

Lightweight and non-greasy, 2° Redoxy Essence possesses remarkable powers of protection, hydration, and brightening. Gentle on the skin, it makes its user look many years younger. Its light, flowing texture is suitable for all types of skin including oily, combination, and even sensitive skin.



QUANTITY OF
WRINKLES
-7%



SIZE OF
WRINKLE
-30%



ROUGHNESS
OF SKIN
+14%



It's important for all of us to do our part to save the Earth. As such, we have upgraded 2° Redoxy Essence bottle with an eco-friendly bottle materials made of fully recyclable PP/PE plastic.

The bottle features a dropper design that allows precise amounts without any wastage. This newly upgraded 2° Redoxy Essence is lightweight and easy to carry, making it convenient to be used anytime, anywhere!

RL RECYCLE

Aside from upgrading 2° Redoxy Essence bottles to environmentally friendly packaging, we have started the RL Recycle recycling campaign. By recycling empty bottles, we are playing our role in making the beauty industry more sustainable. It's our way of practicing sustainable business development while educating our customers about the importance of environmental preservation.

GIVING BACK TO THE NEEDY

RL Recycle isn't our only campaign related to 2° Redoxy Essence. For every 2° Redoxy Essence purchase, RM1 of the proceeds will go to Legacy Care Association Malaysia (LCAM) to support education funds and provide food or school supplies to children from disability centres, underprivileged families, orphanages, asylum seekers and indigenous community.

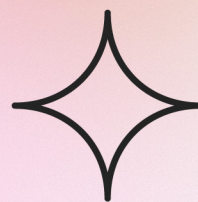
From the first generation to this new upgraded fourth generation of 2° Redoxy Essence, we have improved not only in terms of packaging, but also the quality and technology. This is why it has been the favourite of many customers and a best-seller in the past eight years!

THE FAVOURITE PRODUCT OF ALL TIME!

**Therefore, to give yourself a striking youthful look, protect the suffering environment,
AND serve the underprivileged simultaneously, you know what to do -**

BUY 2° REDOXY ESSENCE!

THE IDEAL SKIN CARE ROUTINE



“

There are many different things a person can do in order to keep the skin in its best possible condition.

”

One of the most important of these is the maintenance of a proper skincare routine. Anyone who maintains a regular skincare routine can expect to have healthier skin, minimizes skin problems, slows down the aging of the skin, and shield the skin from the effects of atmospheric pollutants and contaminants.

But first, we must identify our skin type and select the ideal skincare products that cater to our specific needs. A comprehensive skincare routine should include the following: facial cleansing, application of anti-aging essence, moisturizing and hydrating, application of a mask and application of anti-acne cream.

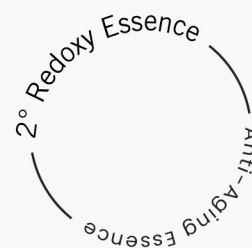
Facial Washing

Regular facial washing is necessary to rid the face of contaminants. Regular facial washing also keeps facial skin adequately hydrated, giving it a fuller and more wholesome sheen. Additionally, facial washing helps with balancing the skin's pH level. A balanced skin pH supports the skin in forming a healthy skin barrier, that prevents water loss and protects the skin from damaging external factors like infectious bacteria or environmental factors like pollutants.

Return Legacy's 2° Activator Fresh is an excellent companion for anyone seeking a facial wash that combines cleansing and protecting formulation. This remarkable cleansing mousse contains Return Legacy's in-house formulation known as Micro-Mineralised Nutrient Technology (MMNT). MMNT enables 2° Activator Fresh to deliver cleansing, hydrating, purifying, and protective effects. 2° Activator Fresh also contains Alteromonas ferment extract to further amplify these effects. This extract reduces the adherence of air pollutants, including PM2.5, alleviates damage caused by atmospheric free radicals, and mitigates the impacts of contaminants on the skin.



Application of Anti-Aging Essence



The skin cells of an average human begin to show signs of age when the person is around 25 years old. So, adding anti-aging products to your daily beauty regime is crucial. Although anti-aging creams and lotions exist, most experts recommend using essences for anti-aging purposes. Essence is more efficient than either creams or lotions because merely fewer drops could maximise the anti-aging effects to become apparent. Essence also tends to have small molecules, making them easier to absorb. In addition, essence prevents evaporation and feels light and non-greasy; this makes them ideal for preventing of hyperpigmentation, sunspots, and wrinkles.

Return Legacy's newly upgraded 2° Redoxy Essence is one such anti-aging essence. Just like 2° Activator Fresh, 2° Redoxy Essence contains MMNT. The MMNT detoxifies the skin, facilitates the formation of micro clusters, and slows the process of skin aging. Above all else, 2° Redoxy Essence also contains technological advancement of acetyl hexapeptide-8, which limits facial muscle contractions, thereby minimising the formation of fine lines.

This inclusion of technological advancement proves a significant decline in wrinkles by up to 30%, reduces wrinkles count by 7%, and improves skin smoothness by 14%. 2° Redoxy Essence also contains sodium hyaluronate and whey protein. The high absorbency properties in sodium hyaluronate help hydrate the skin, creating a plumping and lifting effect on the skin, whilst whey protein encourages skin cell renewal leading to improved skin elasticity and firmer skin.



Moisturizing & Hydrating

While the moisturizing and hydrating facial skin is a relatively common practice, not everyone incorporates it into a skincare routine. However, there is undoubtedly a time for moisturizing and hydrating within such a routine. The most suitable time to moisturize and hydrate the face's skin is immediately after showering. The warm shower water saps the skin of moisture; proper moisturizing and hydrating will thus replenish it. Moisturizing and hydrating also make skin problems less likely to occur. Skin which lacks adequate moisture is more susceptible to issues such as dry and scaly skin.

Three of Return Legacy's skincare products boast incredible moisturizing and hydrating effects - 2° Activator Moist, 2° Activator Hydro and 2° Activator Instant Hydrating Mask! Gentle on the skin and lightweight, 2° Activator Moist keeps the skin moist and supple by guarding it against the effects of dehydration. In addition, it enhances the moisturizing effect by preventing trans-epidermal water loss.

2° Activator Hydro contains sodium hyaluronate. When applied topically, it attracts moisture in skin cells. This reduces dryness and flaking by increasing skin hydration. Return Legacy's 2° Activator Instant Hydrating Mask is suitable for all skin types. This mask moisturizes, hydrates, and rejuvenates the skin. 2° Activator Instant Hydrating Mask's combination of betaine, saccharide isomerate, sodium hyaluronate, and the extracts of Irish moss and vilca rapidly hydrates facial skin, locks in moisture and provides long-lasting hydration for more aesthetically pleasing skin.



Application of Acne Treatment Cream

Acne isn't just something which affects the young; The truth is you can have acne at any age. However, those who regularly use acne treatment creams will keep acne at bay; these creams reduce acne formation by restricting the amount of sebum production. Acne treatment creams also combat skin inflammation, minimize blemishes, and destroy bacteria. They do so through the effects of their active ingredients.

Anyone who seeks a first-class acne treatment cream should consider using Return Legacy's 2° Setitik Acne Treatment Cream. Formulated with tea tree essential oil, 2° Setitik Acne Treatment Cream minimizes the clogging of pores, decreases sebum production and inflammation levels, and eliminates dead skin cells. The combination of these effects prevents the occurrence of acne. Those who have acne scars can also benefit from using 2° Setitik Acne Treatment Cream because it also causes acne scars to disappear gradually. Approximately 92% of users report significant positive impacts on acne and acne scars after just two weeks of consistent use.

If you've been keeping track, that's a total of SIX excellent Return Legacy skin care products - all of which deserve a place in the ideal skincare routine. So, take our word for it - try them for yourself!

AN INTRODUCTION TO FEMALE *Sex Hormones*

“Being a woman is hard work.”
- Maya Angelou



Though this quote may be somewhat harsh, it rings true in so many ways. In addition to societal and cultural burdens and expectations unjustly imposed on women, a woman's body will experience issues related to female sex hormones from time to time. These hormones are the primary forces behind sexual and reproductive development in a woman's body.

ESTROGEN

The main female sex hormones found in a woman's body are estrogen, primarily produced in the ovaries; it also plays a role in the body's management of puberty, menstruation, pregnancy, and menopause. The body parts mainly affected by estrogen are the skin, brain, hair, and cardiovascular and musculoskeletal systems.

Estrogen, like all hormones, is a chemical messenger. It tells your body when to start and stop processes which affect your sexual and reproductive health. Estrogen levels vary throughout women's life. They fluctuate during the menstrual cycle and over a woman's lifetime. This fluctuation can sometimes produce effects such as mood changes before menstruation or hot flashes in menopause.

EFFECTS OF ESTROGEN IMBALANCES

At times, a woman may have imbalanced levels of female sex hormones - either too high or too low. These hormone imbalances can cause the body to experience various physical effects. Some of the most common hormone-related conditions include:

- 1 Infertility**
Estrogen level can disrupt your menstrual cycle. Underlying causes that lead to low and high estrogen may be associated with infertility.
- 2 Premenstrual syndrome (PMS) and premenstrual dysphoric disorder (PMDD)**
The cyclical hormone changes associated with menstruation can cause unpleasant physical symptoms and mood changes. Decreasing levels of estrogen following ovulation are a potential cause of PMS and PMDD
- 3 Menopause**
During menopause, your menstrual cycle stops and your ovaries no longer produce estrogen. The decrease in estrogen may lead to symptoms such as vaginal dryness, mood changes, hot flashes and night sweats.
- 4 Polycystic ovary syndrome (PCOS)**
PCOS is a condition that occurs when the ovaries produce too many androgens. This situation causes your reproductive hormones to become imbalanced. As a result, women with PCOS often have irregular menstrual cycles, missed periods and unpredictable ovulation.
- 5 Obesity**
Estrogen levels are often higher among women with more body fat.

Women who experience extreme forms of these symptoms are advised to seek assistance from a doctor or health professional.

REOXLIFE PRO W+ *and* REOXLIFE PRO W+ GOLD

REOXLIFE PRO



Return Legacy's REOXLIFE PRO W+ is a fantastic tool for any woman who wishes to balance her female sex hormones. It contains estrogen-like compounds derived from plants such as pueraria mirifica, fenugreek, dandelion, wild yam, fenugreek and fennel seed, thereby regulating female hormone secretion in the body.



Additionally, these same ingredients that balance sex hormones simultaneously alleviate any ongoing menstrual problems.

The enhanced formula of REOXLIFE PRO W+ contains ceratonia siliqua extract; this keeps any symptoms related to polycystic ovary syndrome (PCOS) under control. Those who intend to conceive may also benefit from using REOXLIFE PRO W+. This is because regularly taking REOXLIFE PRO W+ will improve fertility. As if that weren't enough, those who have just had a child also stand to gain from REOXLIFE PRO W+ because it promotes healthy lactation as well.



REOXlife PRO



REOXlife PRO W+ GOLD is a second Return Legacy product created to positively affect on female sex hormones. Intended for use by those of menopausal age, REOXlife PRO W+ GOLD contains Estro-G, a substance derived from the extracts of cynanchum wilfordii, phlomis umbrosa, and angelica gigas nakai. Through the effects of Estro-G, REOXlife PRO W+ GOLD promotes restful sleep, relieves night sweats and hot flashes, stabilizes one's emotions, and improves sexual health.

REOXlife PRO W+ GOLD also contains fennel seed, dandelion, pueraria mirifica, and fenugreek. Combining these ingredients promotes intestinal health, provides anti-aging effects, and increases general energy and vitality levels. Other benefits of REOXlife PRO W+ GOLD include improved bone and liver health.



Return Legacy's REOXlife PRO W+ and REOXlife PRO W+ GOLD are the best ways to **keep female sex hormones in check.**

Thanks to them, you'll never have to worry about hormonal issues ruining your life ever again!

REAL COOKWARE

Giving Your Kitchen That Magic Touch



"Cooking is a philosophy;
it's not a recipe."

Marco Pierre White

The kitchen is a unique, magical place where body and spirit are restored. No matter where one might go, there's simply something about one's own kitchen that truly feels "just right". After all, not even the most skilled Michelin-starred chefs understand someone's own taste buds like that same person.

Of course, a well-stocked kitchen needs an array of high-quality cookware such as non-stick and other pans, soup pots, and other appliances. The more diverse the cookware, the more extensive the range of foods that can be made.

RL COOKWARE POT SET



This set includes a pan and soup pot. Both appliances feature a quartz protective layer at the bottom. This layer protects the cookware from dents and scratches, prevents sticking, and accelerates heat conduction to simplify the cooking process.

In addition to being durable and resistant to wear and tear, this quartz layer facilitates uniform heat conduction - a key positive trait in any cooking appliance. This non-stick layer is low-maintenance; just rinse and wipe it after cooking is done - no need to dump it in a dishwasher. The cookware's rapid heat conduction also minimizes the generation of fumes, thus keeping the kitchen air fresh and clean. The thickened bottoms of both appliances are made of multilayer alloy casting and protected by a stainless steel reinforced layer, which makes it possible to use on either a gas stove or induction cooker. Featuring ergonomic handles, heat insulation, anti-scalding mechanisms, and a large capacity, just one pot will generally be needed to cook most foods.

The lid of the cookware is made of tempered glass. This lid will not crack when exposed to high temperatures. With transparent lid, the person cooking can easily track the food's progress.

RL COOKWARE PAN

What foods come to mind when you think of a pan? Soft, pillowy pancakes? A rich, crispy quesadilla? Or even a simple fried egg? You can have the very best of all of those and more with the amazing RL COOKWARE Pan!



Perfect for cooking simple dishes at any time



Best for frying, stewing, and one-pot cooking



Designed for ease of pouring soups and sauces without causing splashes



27.5cm diameter, 7.5cm depth, suitable for 2-5 people.





RL COOKWARE SOUP POT

There's nothing quite like the perfect bowl of soup - its delightful embrace engulfs the taste buds and rejuvenates the spirit.

Once you've had some soup made in the RL COOKWARE Soup Pot, every cell in your body will be crying out for more!



Keeps fluids and aromas inside through micropressure



Steam circulates inside the pot to help the soup cook more rapidly and enhance the soup's inherent flavours



Promotes heat storage, discourages heat loss



28cm diameter, 12cm depth, 4000ml capacity, suitable for 2-5 people

Take your food to the next level with RL COOKWARE - once you've tried using these wonderful appliances, you'll never want to cook with any other cookware again!

LEGACY PLAN	CREATION PLAN
1 ST NOV 2022 (12:00 AM) till 31 ST DEC 2022 (11:59 PM)	1 ST NOV 2022 (12:00 AM) till 31 ST DEC 2022 (11:59 PM)
With only RM58 Get 1 RL Cookware Pan / Pot (4 selections available)	Personal Direct Sponsor / Upgrade Every 272WP Accumulated in one calendar month
Nov With a minimum purchase of RM400 in a single receipt	FREE 1 x RL Cookware Pan / Pot (4 selections available)
Dec With a minimum purchase of RM600 in a single receipt	

** 180 Days Money Back Guarantee **

LEGACY NEWS



On this remarkable night,
we witness the culmination of our Legacians' hard-won triumphs.



Over the past three years, we believe many of our Legacians have faced doubts, pressures and defeats. But on this night, all of you have proved that hard work and persistence paid off!

It was a night filled with emotions and joy. Perseverance has led us to achieve our own breakthroughs and reap the rewards of unlimited possibilities. The theme of Return Legacy's Paragon Night 2022 is **[Metomorphosis. The Infinite Legacy]**. We believe that every Legacian is able to overcome the challenges ahead of them and undergo a true metamorphosis of mind and spirit, leading to continuous personal growth and self-improvement.

We are honoured to be part of this moment of everyone's metamorphosis. We know that there are even greater achievements waiting for all of us, and are thrilled to envision our future accomplishments as we overcome upcoming challenges!

RETURN LEGACY, FOR AN INFINITE LEGACY!

Return Legacy held several offline events in September and October 2022; some were at Return Legacy HQ while others were held in various locations across Malaysia. We are pleased to see that our events held away from the HQ received such a rousing response - it showed us that our events yet to be held will almost certainly see massive turnouts as well!

HEALTHY MIND IN A HEALTHY BODY SERIES

No matter who you are, you can always change and become a better version of yourself.

“Healthy Mind in a Healthy Body” is a talk curated for Legacians on how an improvement in physical health can lead to better mental and emotional outcomes.

20220912

VENUE:
GARDEN VIEW HOTEL, BAHAU

This event in Bahau had a stirring response from Legacians. Our nutritionists shared health and product knowledge and it received an enthusiastic response from everyone.

The night was further enlightened with sharing session from Legacians who shared about the cutting-edge technology of Return Legacy and the changes it did, helping them to regain health and their confident self.



20221013

VENUE:
IMPERIAL PALACE HOTEL, MIRI

This event received a good turnout, especially from the elders. They responded enthusiastically during the talk and were keen to know more about their health and joint problems.



In addition, the sharers shared about their experiences where they suffered from bloated bodies, dull complexion, wrinkles, eye bags, dark circles issues and other health problems. However, Return Legacy's products have brought positive changes to their physical appearance and improvement in health.

We hope that after such awesome sharings, everyone is able to gain health and beauty and confidently show their most gorgeous self!

20221014

VENUE:
PROMENADE HOTEL, BINTULU

Among the two sharers of this event, both suffered from fatigue, obesity, and dull complexion due to endocrine disorder. Fortunately, they are able to alleviate their health problems through our products.

On top of that, many men and elderly attendees were very interested in prostate and menopause related health issues, and have also begun to pay attention to their health.



20221015

VENUE:
RH HOTEL, SIBU



Most of the attendees in the Sibu event were seniors over 65 years old, and it was a success! They were all moved after listening to the sharings, gained confidence in our products and even enthusiastically asked questions during and after the sharing!

20221025

VENUE:
GARDEN VIEW HOTEL, BAHAU



This is the first-ever “Healthy Mind in a Healthy Body” event focusing on our Bumiputera Legacians. During the sharing session, all sharers shared their tremendous changes after using Return Legacy’s products for only a few days. The products not only make them healthier, but also become more beautiful and confident!

OFFLINE EVENTS



20220914

VENUE: RETURN LEGACY HQ

**疫情之下，
你是否松懈了？**

20220916

VENUE: GARDEN VIEW HOTEL, BAHAU

**LEGACY EXPERIENCE
ACTIVITY**



20220917

VENUE: GARDEN VIEW HOTEL, BAHAU

ABC KONSEP

20220921

VENUE: RETURN LEGACY HQ

**KEAJAIBAN
TEKNOLOGI MMNT**



20221013

VENUE: RETURN LEGACY HQ

与EYE同行

20221027

VENUE: RETURN LEGACY HQ

**HALLOWEEN
PARTY**

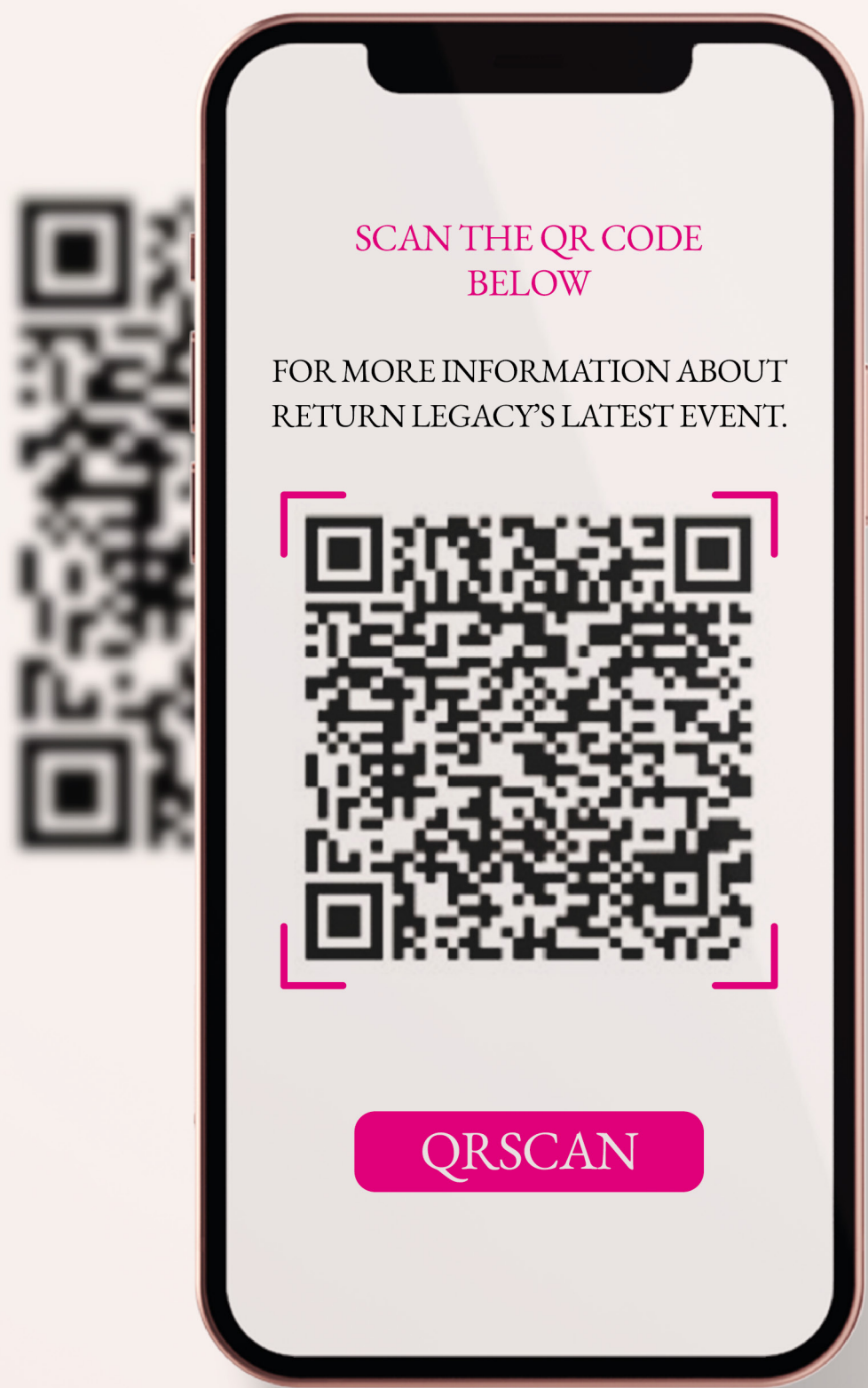


20221029

VENUE: RETURN LEGACY HQ

**如何“银”得
健康?**





NEW UPGRADE 2° REDOXY ESSENCE

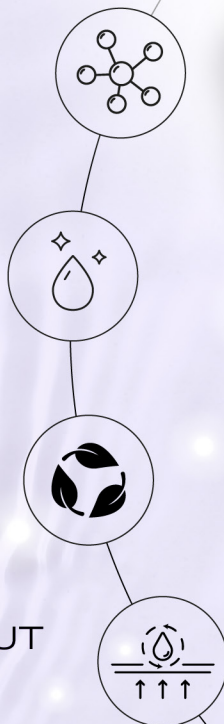
AVAILABLE FROM 1ST NOVEMBER ONWARDS

NEW TECHNOLOGICAL
ADVANCEMENT ON
ACETYL HEXAPEPTIDE-8

REDUCE WRINKLES AND
FINE LINES BY 30%

100% RECYCLABLE
BOTTLE BODY

PRECISE AMOUNT WITHOUT
WASTING A DROP



2°
Redoxy®
ESSENCE
22ml

DISTRIBUTOR PRICE: RM 194.00 (WM) | RM 201.00 (EM)

RETAIL PRICE: RM 241.00 (WM) | RM 250.00 (EM)

For the purchased of every bottle of 2° Redoxy Essence, Return Legacy will channel RM1 to Legacy Care Association Malaysia (LCAM) to support education funds and provide food or school supplies to children from disability centres, underprivileged families, orphanages, asylum seekers and indigenous community.



10 DAYS ONLY

The Secret to *Youthful Skin*

1st NOV 2022 (12:00am) - 10th NOV 2022 (11:59pm)

4x

NEW

2° REDOXY ESSENCE

RM544 (WM) RM563 (EM) 78 WP

*Terms and Conditions Apply. *For Malaysia distributors only.

*Promotion is NOT VALID in conjunction with Legacy Plan PWP.

*During the peak/promotion period, the shipment of your order may experience longer than usual.

*The company reserves the right to change, amend, delete or add to these terms and conditions at any time without prior notice.

*While Stocks Last.

GET YOUR FLAWLESS BEAUTY

1ST NOVEMBER 2022 (12:00AM) - 30TH NOVEMBER 2022 (11:59PM)



2x SETTIK

RM120 (WM)
RM134 (EM)
14 WP

2x HYDRO (50ML)

RM364 (WM)
RM378 (EM)
52 WP

2x MOIST (50ML)

RM364 (WM)
RM378 (EM)
52 WP

3x SHS

RM121 (WM)
RM132 (EM)
14 WP

4x FRESH

RM344 (WM)
RM364 (EM)
35 WP

4x INSTANT HYDRATING MASK

RM193 (WM)
RM221 (EM)
16 WP

3x CLEANSING WATER

RM172 (WM)
RM193 (EM)
21 WP

2x LE'GAIN

RM418 (WM)
RM430 (EM)
55 WP

*Terms and Conditions Apply. *For Malaysia distributors only. *Promotion is NOT VALID in conjunction with Legacy Plan PWP.

*During the peak/promotion period, the shipment of your order may experience longer than usual.

*The company reserves the right to change, amend, delete or add to these terms and conditions at any time without prior notice.

*While Stocks Last.

Bring In
Unique Taste
To Your Life

1st NOV 2022 (12:00am) - 31st DEC 2022 (11:59pm)

** While Stocks Last **



PWP

ONLY **RM58**
0 WP

1 X RL Non Stick Pan / Pot
(4 selections available)

NOV

With min purchase **RM400**
in a single receipt

DEC

With min purchase **RM600**
in a single receipt

180 DAYS MONEY BACK GUARANTEE

SELF COLLECT AND DELIVERY WILL BE AVAILABLE FROM 1ST DECEMBER 2022 ONWARDS

*Terms and Conditions Apply. *For Malaysia distributors only.

*During the peak/promotion period, the shipment of your order may experience longer than usual.

*The company reserves the right to change, amend, delete or add to these terms and conditions at any time without prior notice.

The Perfect Time To Cook

1st NOV 2022 (12:00am) - 31st DEC 2022 (11:59pm)

CREATION PLAN

**Personal Direct
Sponsor / Upgrade**

Every 272WP accumulated
in one calendar month



FREE

1x RL Cookware
(4 Selections Available)

180 DAYS MONEY BACK GUARANTEE

SELF COLLECT AND DELIVERY WILL BE AVAILABLE FROM 1ST DECEMBER 2022 ONWARDS

*Terms and Conditions Apply.

*For Malaysia distributors only. *WP is not earned on FREE products.

*During the peak/promotion period, the shipment of your order may experience longer than usual.

*The company reserves the right to change, amend, delete or add to these terms and conditions at any time without prior notice.

*While Stocks Last.



RETURN LEGACY SDN BHD

201401004515 (1080589-X) (AJL932074)

K-3-3, PUSAT PERDAGANGAN KOTA DAMANSARA
NO 12 JALAN PJU 5/1 KOTA DAMANSARA 47810 PETALING JAYA SELANGOR

☎ 03-6144 6399

✉ customer.service@returnlegacy.com

🌐 www.returnlegacy.com

📘 (Malaysia) www.facebook.com/returnlegacy26

📺 (Malaysia) www.t.me/returnlegacymy